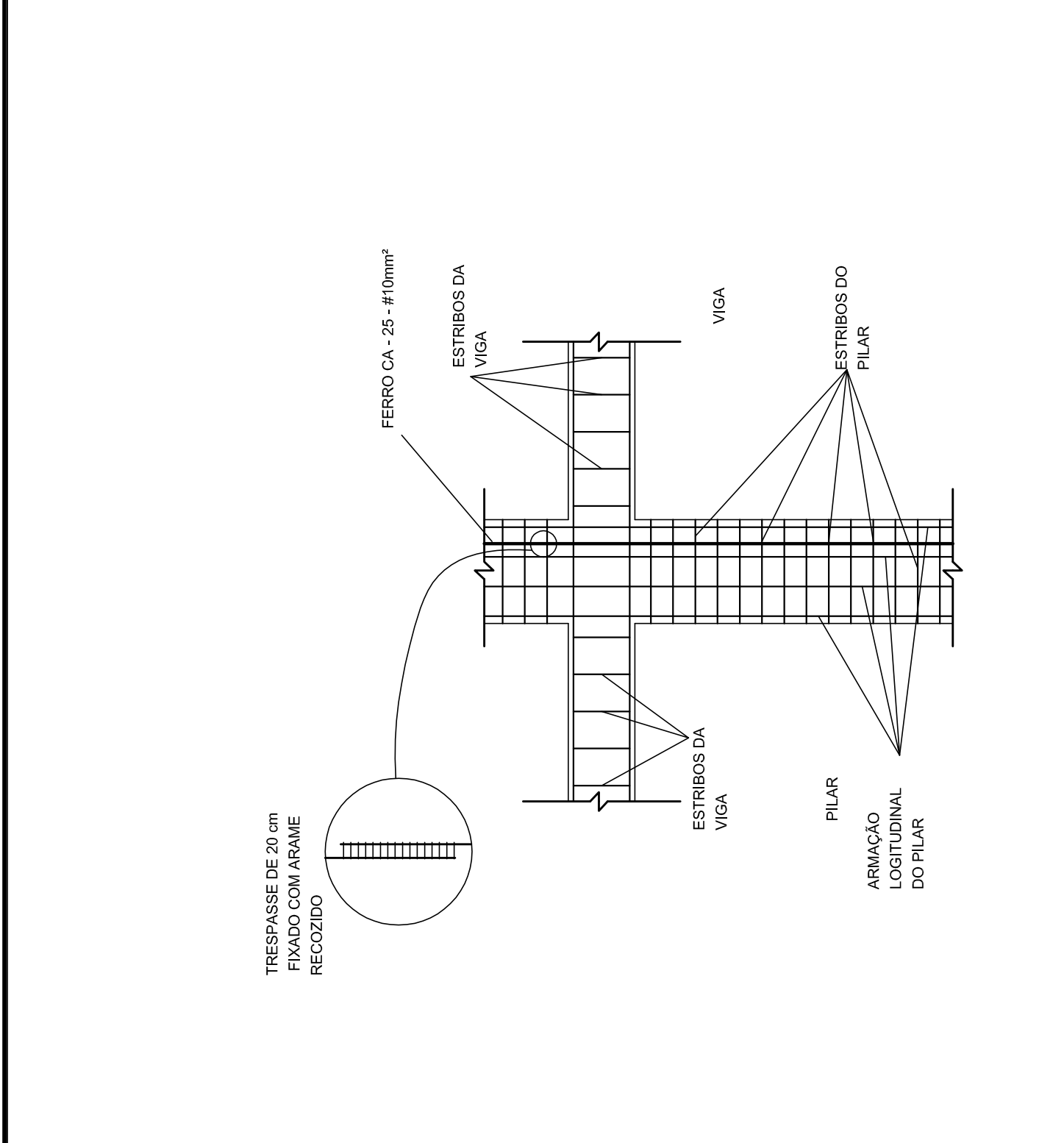
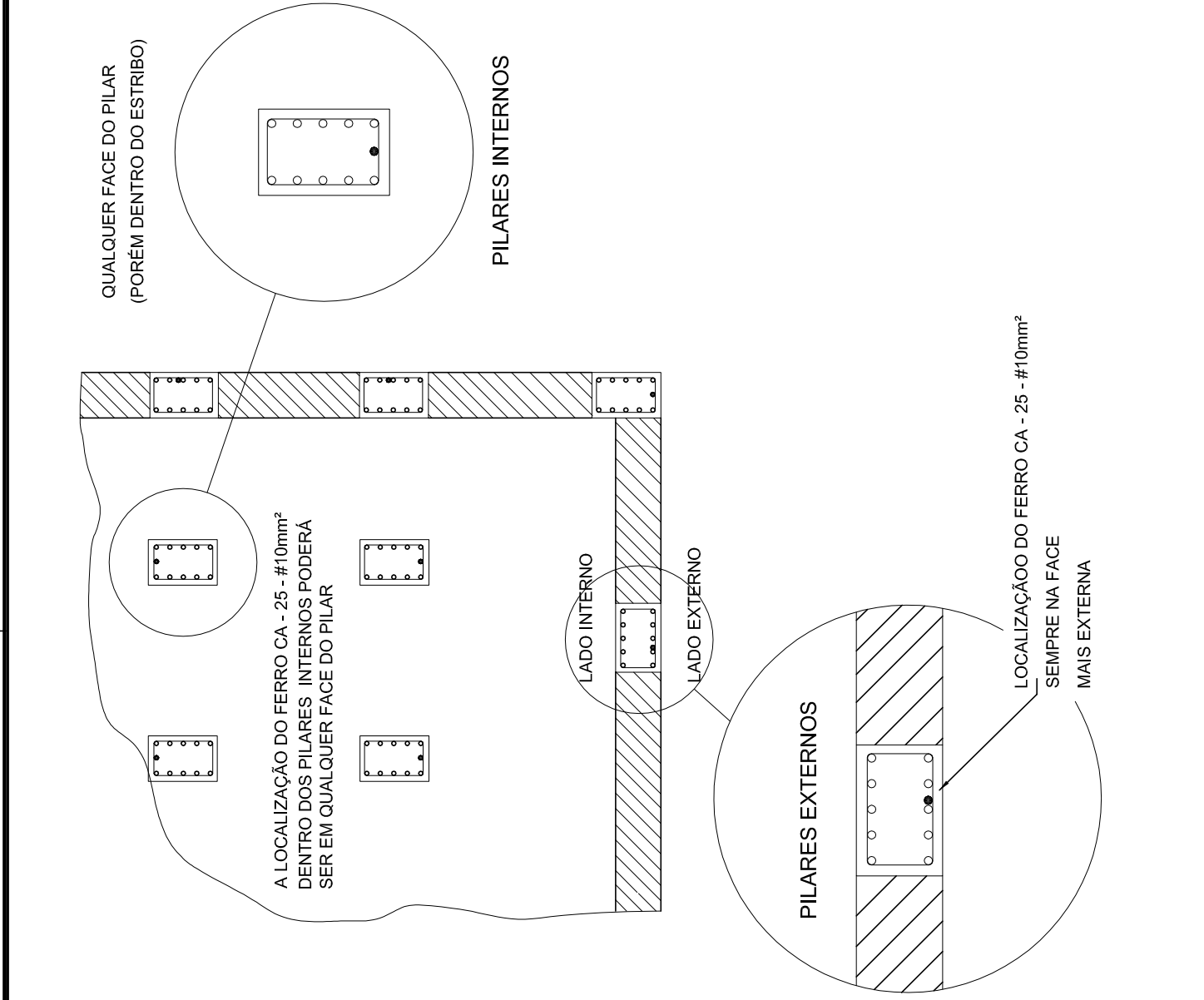


1 DET. GENÉRICO DO ATERRAMENTO NAS FUNDAÇÕES

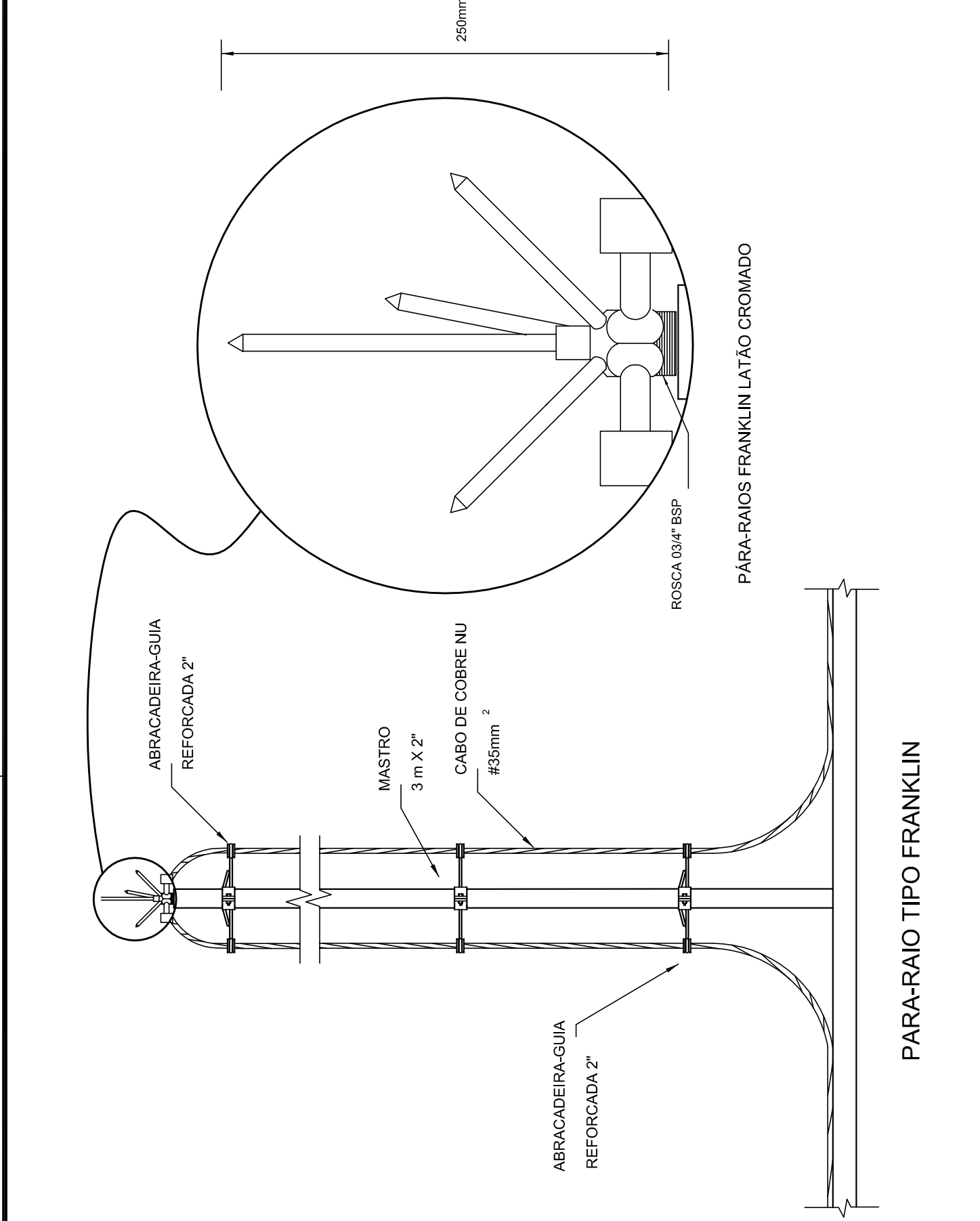
2 DET. DAS DESCIDAS (SPDA)



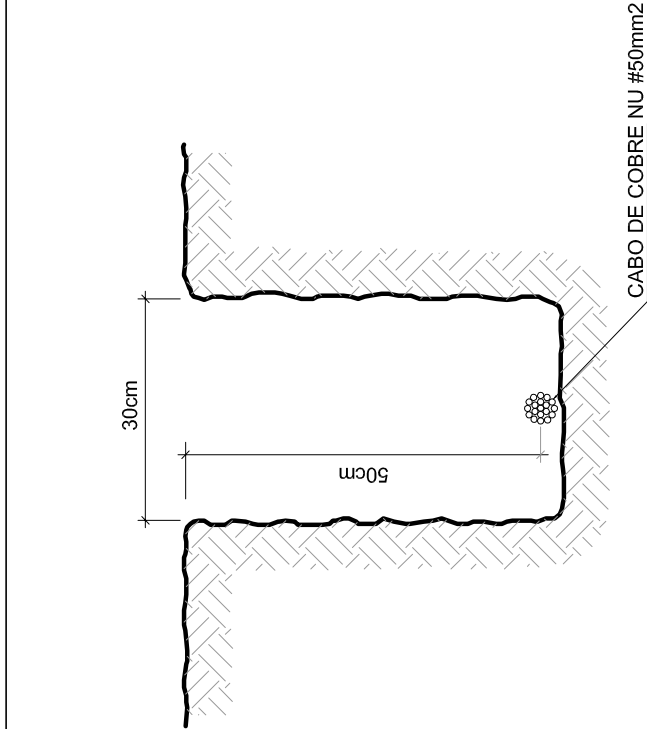
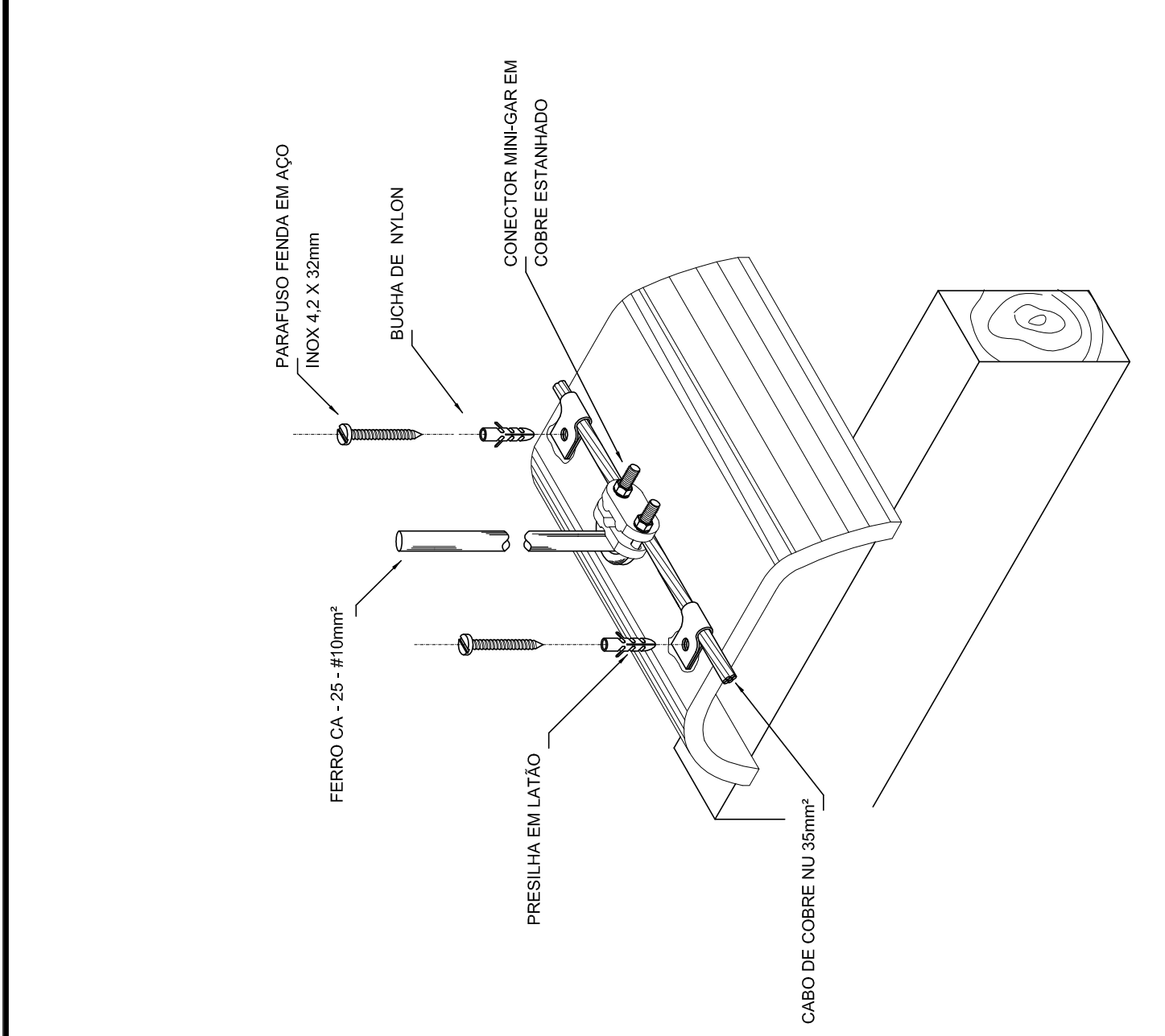
3 LOCALIZAÇÃO DOS FERROS CA - 25 - #10mm² NOS PILARES INTERNOS E EXTERNOS



4 DETALHE DO CAPTOR TIPO FRANKLIN

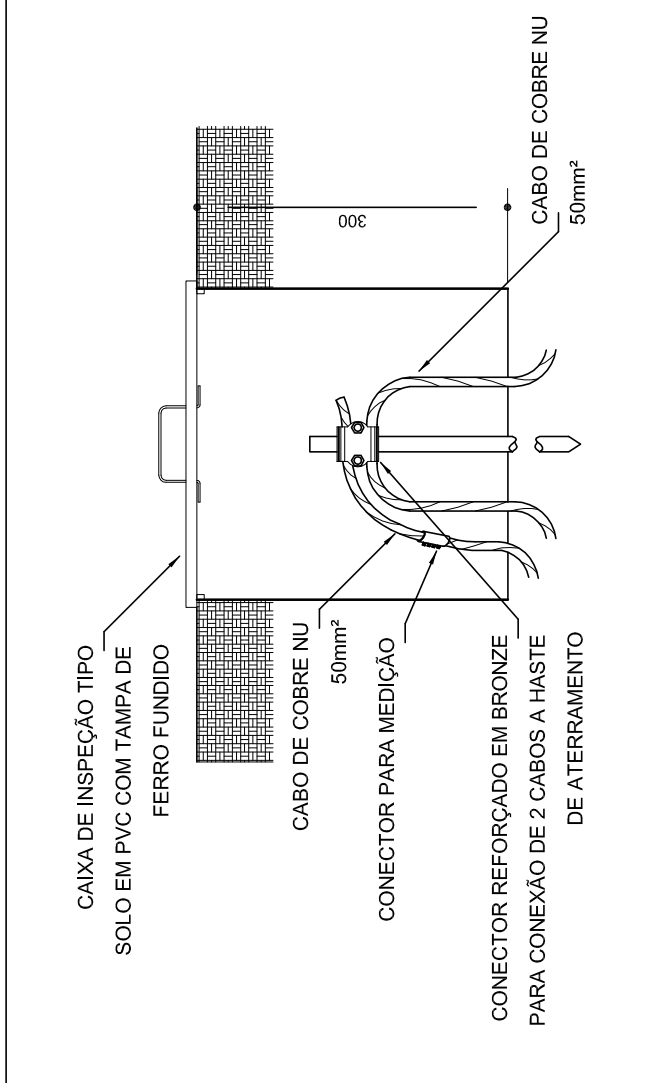


5 DET. FIXAÇÃO DO CABO NA TELHA METÁLICA

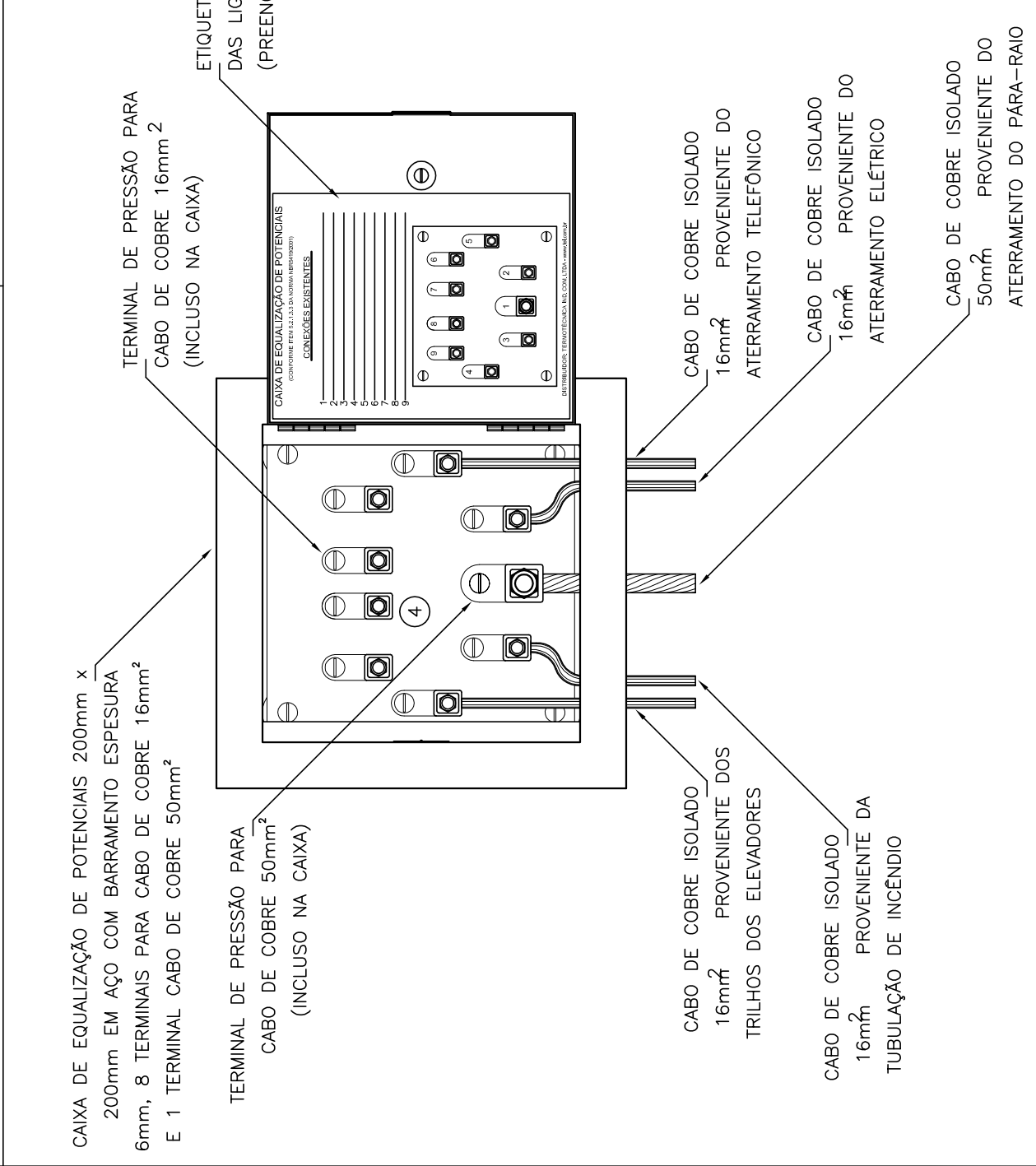
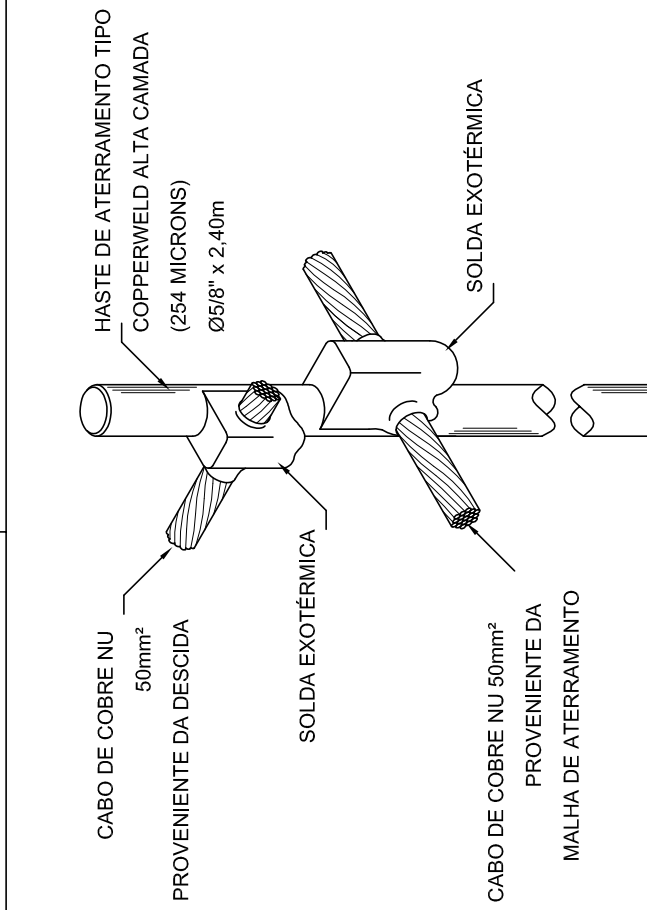


6 VALA PARA CABOS DA MALHA DE ATERRAMENTO

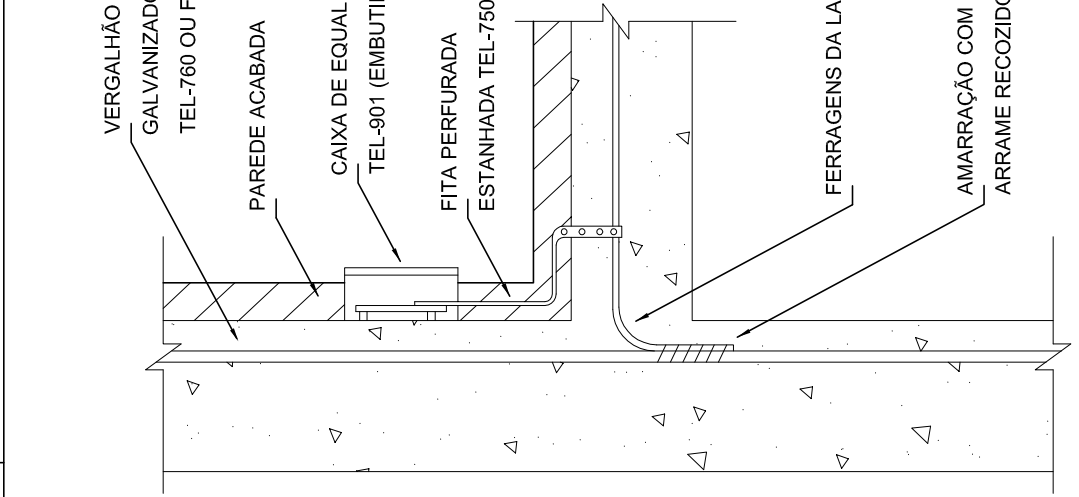
7 DET. - CAIXA DE INSPEÇÃO



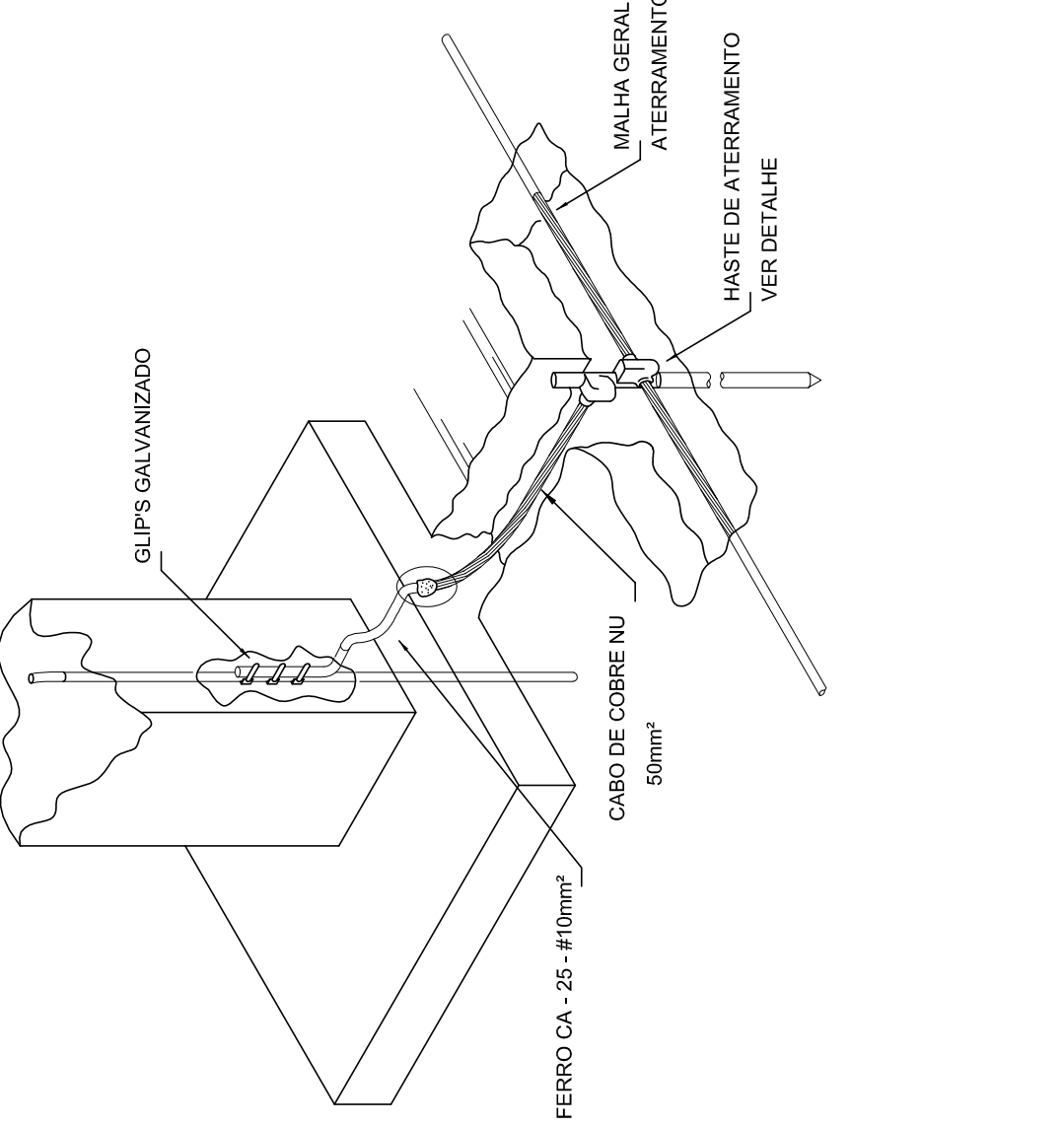
8 DET. - HASTE DE ATERRAMENTO



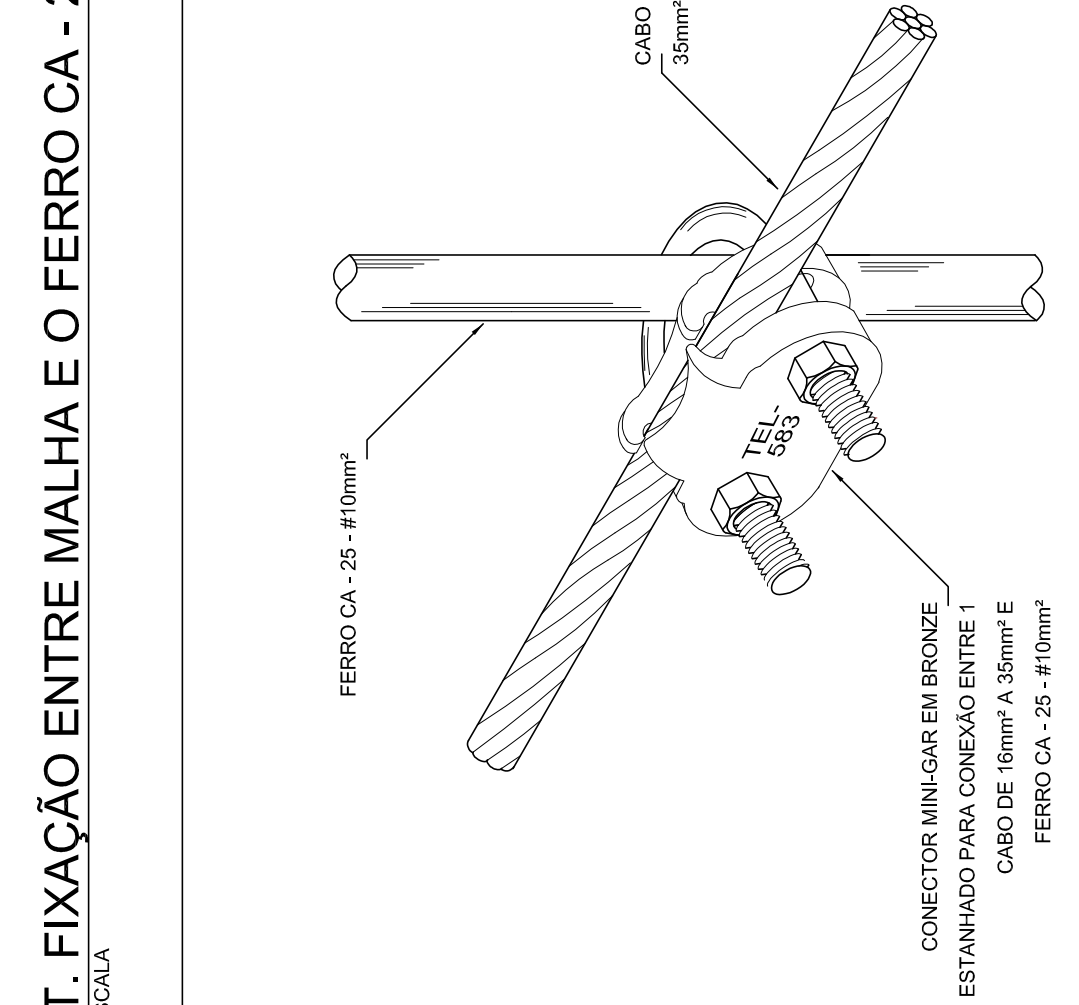
9 DET. UNIÃO ENTRE MALHA DE COBRE NÚ E O FERRO CA - 25 - #10mm²



10 EXEMPLO DE LIGAÇÕES POSSÍVEIS NA CAIXA DE EQUALIZAÇÃO (LEP/TAP)



11 DET. DE INTERLIGAÇÃO DA CAIXA DE EQUALIZAÇÃO



12 DET. INTERLIGAÇÃO DO FERRO CA - 25 - #10mm² COM A CAPTAÇÃO

13 DET. UNIÃO ENTRE MALHA DE COBRE NÚ E O FERRO CA - 25 - #10mm²